

INSIDE THIS ISSUE

PG. 2
Set Subject EDI Topics 2020

PG. 3
American Photographic
Society

PG. 4
Interclub Competitions

PG. 6
Presentations/Workshops

PG. 7 - NEW!
Critique Corner

PG. 8
Club Survey

WELCOME

JANUARY 2020 SKIFFY

Welcome to a new year and a new decade – wishing you all a very happy and snappy year.

I'm hoping that you, your family and friends have been able to stay safe from all the bushfires and were able to enjoy ringing in the New Year.

Thanks to our very active and experienced Committee members there are loads of fantastic things happening for Club members in 2020 and we know you are going to enjoy them all.

First up is a quick and easy survey to find out a bit about what our members are interested in. Please do this as soon as you can, it closes on the 31st January and will only take a minute to complete.

To make Skiffy easy to read I've included lots of hyperlinks including going from the front page to articles of interest and back again to the front page (located at the bottom right of most pages) – if you have any problems just email me.

IMPORTANT MESSAGES

1. If you haven't entered any competitions for a while, or ever, why not give it a try? If you are a little nervous about the print competition try your hand at uploading some in the EDI competitions. It can be a bit nerve wracking but it is a great opportunity to get some feedback about your work and to see other people's work.
2. You could always check out Critiques Corner and get some helpful tips before you submit your images for competition.
3. Please feel free to email me if you have any suggestions, ideas or requests for Skiffy: skiffy16sphotographyclub@gmail.com



LONELY – LINCOLN ROBERTS

SET SUBJECT EDI TOPICS 2020

JANUARY - GET YOUR ENTRIES IN NOW!

LONG EXPOSURE PHOTOGRAPHY - GREG Carruthers

"Your image must be in colour and show obvious use of extended shutter speed (long exposure). When you keep your shutter open for an extended period of time your image can take on a whole new transformation. Long exposure photography gives you the ability to capture movement creatively and make your image unique. Examples could include, Night-time urban city scapes showing light trails, Landscapes where bodies of water become opaque, star trails or light painting to just name a few."

Images will be judged primarily on the photographer's ability to produce a unique image by their obvious use of long exposure and creativity.

FEBRUARY

WHEELS – Susan Slack

Any type of physical wheels (no copies of artworks using a wheel). Wheels may be vehicular wheels, ships wheel, potter's wheel, Ferris wheel, flywheel, wheelchair wheels, roulette wheel, etc. I want a story that uses a wheel or wheels as the main element. Try to avoid simply static photos of wheels unless telling a story of a broken wheel for example.

MARCH

SEAGULLS IN ACTION – Colin Schofield

Members are required to photograph these birds in action – fighting, bathing, flying, catching food (even chips) etc. They must not be taken in a static position. Focus must be on the birds, so the bird must be very dominant in the image. The image must exclude people.

REMINDER: JANUARY 2020 COMPETITION

ENTRIES NEED TO BE IN BY 11:00PM SUNDAY 12TH JANUARY

PRINT: Colour and Nature Print competitions will encompass large prints across all three grades and small prints in two grades (A and B). Print judging in January will be shared by club members Di Schofield and Roy Killen.

EDI: Colour, nature and set subject - long exposure photography.

Colour EDI's will be judged by Joe Tam whilst Graeme Watson will judge our Nature EDI competitions. Both judges have judged for us before.

BASIC JUDGING COURSE

Our very own Bill Chambers will be conducting a 2-day Basic Judging Course at the Belmont 16s Club on two consecutive Sundays in February:

Day 1 - Sunday 2nd February and,

Day 2 - Sunday 9th February 2020.

Bill will be assisted by another of our own, Roy Killen.

Please note that this is **not** designed as a 'be all/end all', or 'know-everything-there-is-to-know' style of course. Rather, it is loosely based on Queensland judging system whereby students complete this course and are then mentored by qualified judges to complete their training.

Even those who are not interested in actually becoming judges in the future will gain an insight into the judging process and can use what they learn to enhance their own images.

The course will be \$40 for non-members, Belmont 16s Photography Club members will receive a 50% discount, reducing the price to a very reasonable \$20.

Payments can be made via the website by 10th January 2020.

In order to give the most benefit to all participants, we are limiting numbers to 15.

NOTE: The course is filling quickly - there are only a few places left. If there are enough requests, a further course may be run in the latter half of the year.

MAITLAND INTERNATIONAL

Entries for the Maitland International Exhibition close on **13th January**. The sections are Colour Prints, Monochrome Prints, Nature Prints, Colour EDI, Nature EDI, Photo Travel EDI.

Entry is via the website <https://maitlandsalon.myphotoclub.com.au>

Any of your images that gained an award in our monthly club competitions are worthy of entry. Please support your fellow local photographers who go to a lot of trouble to organise this prestigious competition.

If you bring your print entries to the club training night on 8th January they will be taken to Maitland for you.

If you have any questions about this exhibition please contact Roy Killen.



IT WAS HIM! - DI WOOD

[GO TO FRONT PAGE](#)

PHOTOGRAPHIC SOCIETY OF AMERICA INTERCLUB COMPETITIONS

BY ROY KILLEN

ROUND 1 NATURE

Neville Foster gained an Honour for his “Long Lunch” image.

Overall we were placed 13th out of 21 clubs.



ROUND 1 PHOTO TRAVEL

Margot Hughes gained an Honourable Mention for her “Loading the Cart” image.

Overall we were placed 9th out of 19 clubs.



ROUND 1 OPEN COLOUR/MONO

Roy Killen gained an Award of Merit for his “Silver Miner” image.

Overall we were placed 5th out of 23 clubs.



ROUND 1 PHOTOJOURNALISM

These results are not yet available.

ROUND 2 ENTRIES ARE OPEN

Go to the normal competition entry page on the club website and use the PSA Interclub buttons on the right of the page to select the section you want to enter.

You can enter ONE image in each section (Open, Nature, Photojournalism and Photo Travel). If you try to enter and your image from Round 1 is still there you can either leave it or delete it and enter a new image.

ENTRIES FOR ROUND 2 CLOSE ON 1st FEBRUARY. If you have any questions about entering please email Roy Killen roykillen@mac.com.

[Go to front page](#)

WINTER WONDER – PETER STANLEY

PRESENTATION/WORKSHOPS

JANUARY 2020

BY DI SCHOFIELD

8/01/2020 - 7:15

Michelle Kennedy is an international award winning photographer whose presentation is on creative photography. Michelle will demonstrate how she completes a creative image from scratch to finish.

Michelle is a very gifted photographer and enjoys sharing her imagination and expertise.

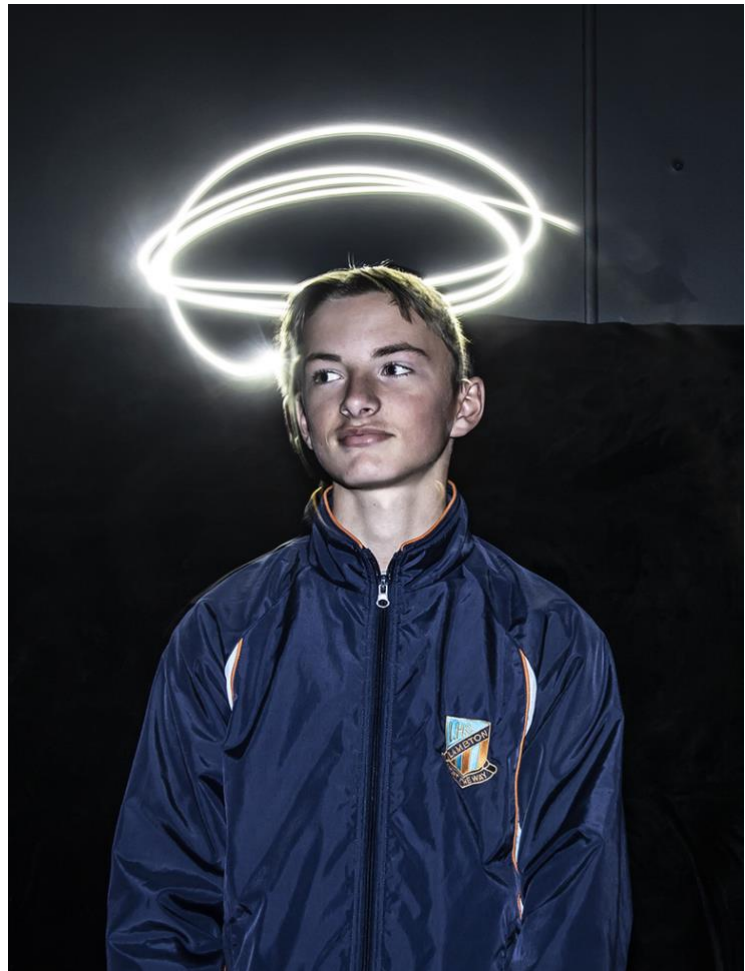
22/01/2020 - 7:15

Beau Pilgrim - 'Turning your photography hobby into a business'.

Beau is a professional photographer.

I would recommend everyone looks at his website: <https://www.beaupilgrim.com/home>

He has come highly recommended by the Snappers Club.



FLASH PHOTOGRAPHY - KHAN RICHARDSON

[Go to front page](#)

CRITIQUE CORNER

BY COLIN WOODS

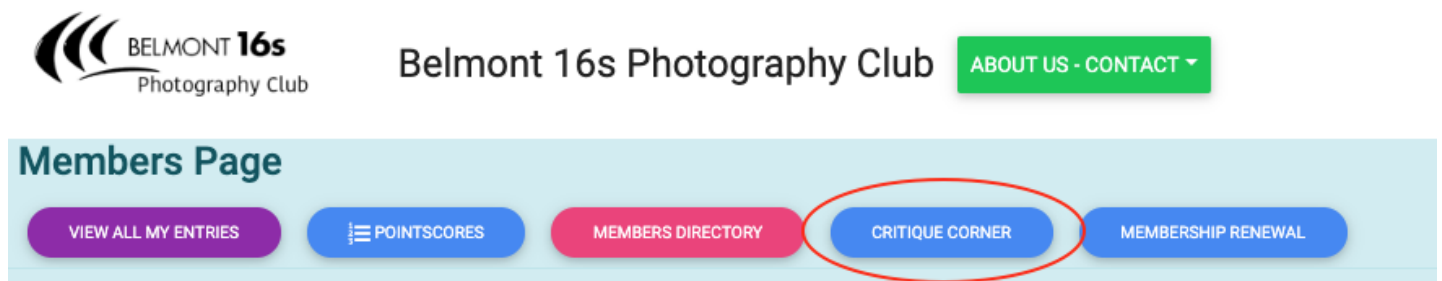
An exciting new feature, known as the *Critique Corner*, has been introduced to the Club website.

The Critique Corner aims to help members to fine-tune potential entries by gaining feedback from other members before the image is entered into a competition.

All members, regardless of experience are encouraged to upload images and make comments on images. The aim is to help each other to develop both your image capture and processing skills, and to take the judges' point of view when assessing an image. There are no grades within this activity.

Each member can upload one image per category. Once uploaded you can use this image in an upcoming competition. You can remove the image and replace it with another image whenever you choose.

The critique corner is accessible from the Members page (use the grey Members button) as shown below:



This is a new MyPhotoClub feature so feedback to colin@myphotoclub.com.au is welcome. All members are subscribed to receive a once a day notification message when new images are submitted. Go to the Critique Corner to unsubscribe.

More information, including a video, is on the Critique Corner page.

[*Go to front page*](#)

CLUB SURVEY

FOR YOUR URGENT ATTENTION

BY SUE CRICKMORE

Deadline – 31/01/2020

Welcome to the New Year and many exciting things are planned to assist you with your photography passion. To better tailor club activities to people's interest we are conducting a very quick online survey very early in the year to better plan for your continuing development and enjoyment from being a member of 16 Footers Photography Club.

The purpose of the survey is to develop a better understanding of what members want from their club. Currently one third of the members are actively involved in the club competitions and the training nights that are held every month except December. The survey has only 5 questions to find out what other activities you would like to participate in.

The online survey will take less than 2 minutes of your valuable time to complete. A separate email will be sent to you shortly. Simply click on the link to open the survey, complete and send. The Committee is keen to have your feedback. For those who would prefer to complete a paper-based survey these will be available on club night.

[Go to front page](#)

BORROWING CLUB EQUIPMENT

GREG CARRUTHERS

Please contact Greg if you would like to borrow any of the club's equipment, so if you need to borrow the mat board cutter, Spyder, scanner or, you would like to purchase mat boards to mount your images.

Greg's details can be found in the members link on the club website.

Greg will try to bring some boards along to competition nights for members to purchase at \$2 per board. If you know you require a large number of boards (e.g. more than 10), please contact Greg before the night via text or email.

[Go to front page](#)

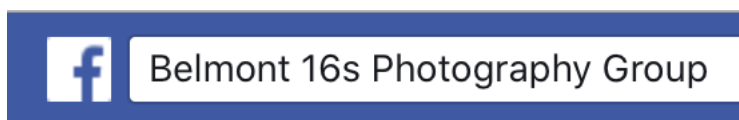
CLUB COMPETITION INFORMATION

For all competition definitions please see the club documents and information in the Members area of the website.

MEMBERS
CLUB DOCUMENTS – RULES / FAQs / AGM / SET SUBJECTS
SKIFFY – OUR NEWSLETTER
PRESENTATION CALENDAR / EDUCATIONAL RESOURCES / USEFUL LINKS

STAY CONNECTED

You can stay connected with other club members and find out about activities through the club's website and Facebook group and Website: www.belmont16s.myphotoclub.com.au



BORROWING CLUB EQUIPMENT

Club members are able to borrow the following equipment:

- Mount board cutter
- Spyder for monitor calibration
- Flat-bed scanner

Please contact Greg Carruthers if you wish to borrow any equipment.

PLEASE SUPPORT BELMONT 16S

Please remember when visiting [16 Footers](#) to present your membership card when having a meal and/or something to drink as all of these purchases are credited to our overall membership purchase tally and if we reach the average spend per member, as determined by 16 Footers, we become eligible for sponsorship to the value of \$1,000 each financial year. This sponsorship allows us to keep membership prices low and gives us funds to purchase Club equipment and to put on events for members.

The Photography Club Committee would encourage all members to consider the 16s when planning a night out and don't forget to present your membership card when making purchases!

[Go to front page](#)

SAVE THE DATES

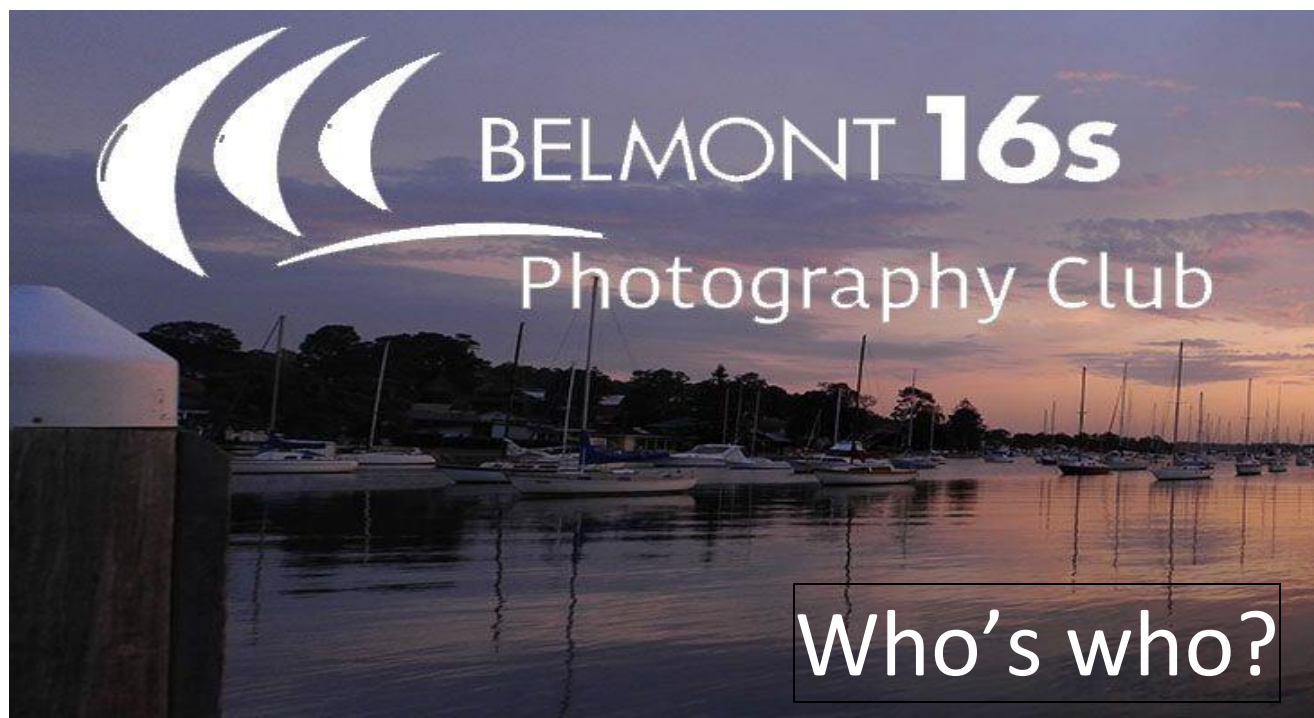
JANUARY 2020

8TH COMMITTEE MEETING - 6-6:45PM
PRESENTATION NIGHT: MICHELLE KENNEDY

15TH COMPETITION NIGHT - NATURE

22ND PRESENTATION NIGHT: BEAU PILGRIM

[GO TO FRONT PAGE](#)



COMMITTEE MEMBERS FOR 2019-20

President

Dave Vane

Vice President

Dennis Archibald

Secretary

Susan Slack

Treasurer

Liz Woods

EDI & Judge Co-ordinator

Dennis Archibald

Membership Co-ordinator

Annette Collins

Webmaster

Colin Woods

Presentations Co-ordinator

TBA – Volunteers please

Social Activities Co-ordinator

Barbara Hunter

Equipment Loans Co-ordinator

Greg Carruthers

Club Patron

Les Porter - 4958 5840

www.lesporter1.com.au

Committee Members

Katherine James, Barbara Hunter, Alex Hunter, Annette Collins, Roy Killen, Diane Schofield, Bill Chambers, Terina Vale, Julie Brooks and Annalisa Fowler, Greg Carruthers, Jennifer Carrigan and Thomas Buckwalter.

Please feel free to contact any of the Committee members to discuss club matters and to have those matters raised at a Committee meeting.

The Committee meets at 6pm on the first Wednesday of each month.

Newsletter Editor

Julie Brooks

skiffy16sphotographyclub@gmail.com

[Go to front page](#)