

Who's who in the Club

President
David Vane

Vice President
Dennis Archibald

Secretary
Susan Slack

Assistant Secretary
Jill Helps

EDI & Judge Co-ordinator
Dennis Archibald

Treasurer
Liz Woods

Membership Co-ordinator
Annette Collins

Webmaster
Colin Woods

Presentations Co-ordinator
Diane Schofield

Social Activities
Co-ordinator
Barbara Hunter

Equipment Loans
Co-ordinator
Greg Carruthers

Committee Members
Katharine James
Ian Marriner
Roy Killen
Susan MacNeill
Bill Chambers
Terina Vale
Lee-Ann Hattander

Club Patron
Les Porter - 4958 5840
www.lesporter1.com.au

Please feel free to contact any of the Committee members to discuss club matters and to have those matters raised at a Committee meeting. The Committee meets on the first Wednesday of each month.

Newsletter Editor
Lee-Ann Hattander
leeanphotography63@gmail.com

Skiffy

Newsletter for the Belmont 16s Photography Club

June 2019

Don't forget - New Start time for Competition Nights

From the May competition night (16th May) the judging will commence at 7:00pm instead of 7:30pm.

Please ensure your prints are on the stands no later than 6:30pm to allow the judge time to view the prints before judging commences at 7:00pm.

Hopefully the earlier start will help prevent some of the late finishes we've experienced in the past.

\$2 entry for Presentation nights

Just a reminder to all members that there is a \$2 entry for the presentation nights. This small fee helps the club to pay for the costs related to securing quality speakers.

The presentation nights are a fabulous opportunity to learn and be inspired by other photographers, and \$2 is a small price to pay to have access to first class presenters.

Thanks must also go to Diane Schofield who does a great deal of work behind the scenes, sourcing and booking presenters. She does a wonderful job, and I am sure that all members greatly appreciate her efforts.



Say Cheese
Di Wood

NPF Weekend - from Barbara Hunter

This year's NPF is scheduled for Saturday 13th and Sunday 14th July. This is a great weekend of competition, guest speakers and socialising with fellow photographers from across the region. Closing date for entries is Friday 21 June.

Entries:

Prints - 2 prints each in Colour, Monochrome, Nature and Small Prints.

EDIs - 2 images each in Colour, Monochrome, Nature and Creative.

Entry \$30. This includes images entries, attendance on both days and morning tea on Saturday.

NPF Photo Safari will be held on Sunday 28 July. Location to be decided.

NPF Treasurer Needed

The NPF committee is in need of a Treasurer. There isn't much work involved, probably only 3 - 4 weeks at NPF time. Anyone interested in becoming Treasurer should contact Barbara Hunter

June 2019 Presentations - from Diane Schofield

The 2019 presentations program is now on the website in the documents area:

<https://belmont16s.myphotoclub.com.au/club-rules-and-documents>.

Please scroll to the bottom of the page and you will locate it. It will be regularly updated.

June Presenters

12 June - Bill Chambers - Aperture, ISO, Shutter Speed

Bring your cameras and manuals to this session as it is the preparation for the practical at Belmont 16s on Saturday 15 June. Bill will be the leader for the practical. Read your camera manual before 12 June. If you cannot find it, download it!

We all know that Bill is a fantastic photographer and has a lot of patience, however, it is expecting a lot from him if we expect him to be a 'techo' expert for every camera on the market.

26 June - Roy Killen - Solving Common Problems in Photography

This session is all about YOU! If you have a particular problem related to image capture or processing that you would like Roy to discuss, please email him as soon as possible (roykillen@mac.com) so that he can include the solution in his presentation.



*This roof leaks
Frank Kolver*

June Judges - from Dennis Archibald

Print Competitions.

Colour and Monochrome print competitions will encompass large prints across all three grades and small prints in two grades (A and B). Our print judge for June will be **Michael Lynch**.

Michael has been practicing photography since 1972 and is a successful entrant in National and International photographic competitions. Over the years he has acquired many awards and is now a regular entrant in international competitions. He is an accredited judge and still judges competitions throughout NSW camera clubs. Michael has a great interest in all aspects of photography. He enjoys helping beginners and is encouraged by the magnificent work that local club members are producing in their local competitions. He is a passionate Black & White landscape, animal, wedding and portrait photographer.

EDI Competitions

EDI entries for Colour, Nature and Set Subject close on Sunday 16th June and will be available for all three grades. Student members can enter the Set Subject competition.

Colour EDIs will be judged by **Mieke Boynton** APSEM GAMPS EFIAP/dI. Mieke has judged for us previously and if you follow her on Instagram you would have recently seen stunning images she has taken in Morocco and Norway. Mieke is a highly-acclaimed professional landscape photographer whose compelling landscapes and stunning aerials have won awards all over the world. She is dedicated to capturing and sharing the natural beauty of the amazing world we live in.

Monochrome EDIs will be judged by **John Newtown**. John has judged for us previously and is well known to senior members of our club.

John has been an active enthusiast photographer for over 65 years (started young) and is a member of The Australian Photographic Society (APS), Photographic Society of America (PSA) and Federation International De L'Art Photographique (FIAP). He has had a long association with the Camera club movement as member, office bearer (various positions including President, Competition Secretary, Training Officer, Publicity Officer and FCC delegate), and was awarded Life Membership of his local club in 2003. He also gives his time to other clubs as a judge and speaker. At a state level he has served a number of terms on the executive of the Federation of Camera Clubs NSW, and on seven occasions has been a major presenter at judges training courses for that state Body.

His interest extends into most areas of photography in both print and digital formats. He appreciates and enjoys all styles of photographic expression. However, in his own photography, he has a particular leaning towards Nature and Photojournalism. John has been a highly successful exhibitor and judge in both National and International Exhibitions, he is also regularly invited to judge at Local Shows, Art Exhibitions and The Federation of Camera Clubs Topshot and Interclub competitions. His success has been acknowledged by The Australian Photographic Society by the awards of Associate (AAPS) in 2004, Fellow (FAPS) in 2013 and Master (MAPS) in 2014. His achievements were also recognized internationally by Federation International De L'Art Photographique with the award recognition of AFIAP (Artiste FIAP) in 2012 and then EFIAP (Excellence FIAP) in 2013.

As well as his images being displayed and awarded in numerous National and International Exhibitions, John has enjoyed a great deal of success in running and mounting of various exhibitions and was the founding Chairman of Sutherland Shire National Exhibition of Photography which he ran for the first Twenty five years of its operation and is still on the committee. He was also Exhibition chairman of a Bicentennial project "Face of Australia Photographic Competition" in 1988.

In recognition of his service to photography in 1997 the Australian Photographic Society honored John with a service award SSAPS for outstanding service to the Australian Photographic Society, especially recognizing his service to photography within the State.

John is currently a member of Cronulla Sharks Photography Club, St George Leagues Photographic Society and The Entrance Camera Club. He is the NSW State Representative of the Australian Photographic Society and a Councilor of the Nature Group of that Organization.

June Set Subject - Iconic Australia

Roy Killen from our Advanced Grade will judge this month's set subject - *Iconic Australia*

The principal content of the image should be a location, object, event, activity, person or product that is generally regarded as an Australian Icon. That is, something that is regarded by most people as a representative symbol of Australia, or something/someone who is regarded as embodying the essential characteristics of being Australian.

The image should have all the usual elements of a good photography - composition, lighting, interest, good technical qualities etc and not be a simple record shot.

Please make sure you read the definitions for the Set Subjects for the following months. They can be found in the Members area on the Club website.

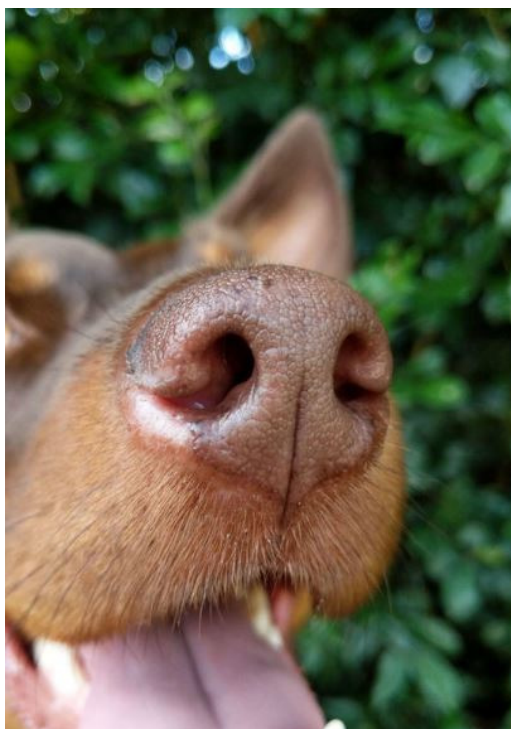
April Judges Comments - from Dennis Archibald

Judging of Colour EDIs was undertaken by Diana Magor, and Mono EDIs by Denise Perentin. I thought it worthwhile to include Denise's overall comment in full:

"Thank you for allowing me to judge your wonderful images. Please understand that judging is purely subjective. There was something I liked about each and every one of these images. What may be seen as a subject that many photographers have captured previously, it may be the first time that you have taken an image like it and are really contented with it and yourself, which you should be. My critique is only my interpretation and meant only as a guide, whether you agree or not. I always say many images that do well in club comps, I would not hang on my wall, but I have others that do not do any good at all in competitions that I would put up on my wall. At times these are two different types of photography. Do not lose the passion, keep taking new images and enjoying your photography."

In Set Subject our own Susan Slack made the following general comment:

"There is a need to read and re-read the definition given. All grades had some trouble with this. However I did admire all the beautiful pets."



Nosy
Keeley Smith

Borrowing Club Equipment - New Contact - Greg Carruthers

Alex & Barb Hunter are moving house and needed someone to take over the role of looking after some of the clubs equipment and mat boards. Greg Carruthers has volunteered to take on the role, so if anyone needs to borrow the mat board cutter, spyder, scanner or needs to purchase mat boards to mount their images, they now need to contact Greg Carruthers. Greg's details can be found in the members link on the club website.

Greg will try to bring some boards along to competition nights for members to purchase at \$2 per board. If you know you require a large number of boards (eg more than 10), please contact Greg before the night via text or email.

Lake Macquarie National Exhibition of Digital Photography

Entries for the 2019 Lake Macquarie National will open on 1st July. You can find more details at the Lake Macquarie National website - <https://lakemacnat.myphotoclub.com.au/>.

Further information will be posted as it becomes available.



*Strangers in a narrow lane
John Hollett*

Belmont 16s Photography Club Exhibition

The Raymond Terrace Library will be hosting our exhibition in May 2019. The opening is on Friday 3rd May. Cessnock City Library will then be hosting this exhibition in June 2019.

Please make sure you see it.

Thank you all for contributing. A big thank you to the workers, especially Katherine James who cut mounts and framed all of the images.

Upcoming Monthly Competitions & Events

June Competitions	Colour, Mono	Set Subject - Iconic Australia - Judge Roy Killen
June Presentations	Wed 12th - Bill Chambers - Aperture, ISO, Shutter speed Sat 15th - Practical - Bill Chambers - Aperture, ISO, Shutter speed - @ Belmont 16s Wed - 26th - Roy Killen - Solving common problems in Photography	
July Competitions	Colour, Nature	Set Subject - Mood - Judge Alex Hunter
July Presentations	Wed 10th - Bill Chambers - Basic Flash Techniques Wed 24th - Roy Killen - Resizing images (down and up)	
August Competitions	Colour, Mono	Set Subject - Creative Flash - Judge Bill Chambers
August Presentations	Wed 14th - Roy Killen - Analysing and evaluating images Wed - 28th - Jye Currie - My photographic journey	
September Competitions	Colour, Nature	Set Subject - Fog or Mist Landscape - Judge Di Schofield
September Presentations	Wed 11th - Michelle Kennedy - Creative thinking and composite images Wed 25th - Diane Schofield - Preserving our heritage - photobooks	
September Club Outing	Sat - 14th - Hunter Wetlands - Bird & Nature Photography (will include morning tea)	
October Competitions	Colour, Mono	Set Subject - Self Portrait - Judge - Colin Woods
October Presentations	Wed 9th - TBA Wed 23rd - Roy Killen - Lake Macquarie Digital National Competition	
November Competitions	Image of the Year	
November	Wed 13th - Neville Foster - Macro Photography	
December	Christmas party and awards presentation	

BELMONT 16S PHOTOGRAPHY CLUB

For all competition definitions please see the club documents and information in the Members area of the website

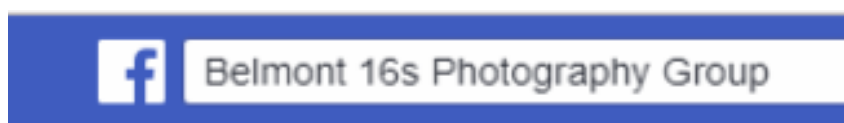
MEMBERS
ALL CLUB DOCUMENTS AND INFORMATION
SKIFFY – OUR NEWSLETTER
TRAINING / PRESENTATION NIGHTS AND SUPPORTING DOCUMENTS

Stay Connected

You can stay connected with other club members and find out about activities through the club's website and Facebook group

Website

belmont16s.myphotoclub.com.au



Borrowing Club Equipment

Club members are able to borrow the following equipment:

- Mount board cutter
- Spyder for monitor calibration
- Flat-bed scanner

Please contact Greg Carruthers if you wish to borrow any equipment.

Please support Belmont 16s

All members are reminded when visiting the 16 Footers to present their membership cards when making a purchase, drinks, food etc as all of these purchases are credited to our overall membership purchases and averaged out. If we reach the average spend per member, determined by the 16 Footers we become eligible for sponsorship to the value of \$1000 each financial year. Unfortunately our failure to reach the average spend per member means that we do not reach that \$1000. Without sponsorship it can only mean that Photography Club membership fees would have to rise. I encourage all members to consider the 16s when planning a night out and don't forget to present your membership card when making purchases.