

Who's who in the Club

President
David Vane

Vice President
Dennis Archibald

Secretary
Susan Slack

Assistant Secretary
Jill Helps

EDI & Judge Co-ordinator
Dennis Archibald

Treasurer
Liz Woods

Membership Co-ordinator
Annette Collins

Webmaster
Colin Woods

Presentations Co-ordinator
Diane Schofield

Social Activities
Co-ordinator
Barbara Hunter

Equipment Loans
Co-ordinator
Alex Hunter

Committee Members
Katharine James
Ian Marriner
Roy Killen
Susan MacNeill
Bill Chambers
Terina Vale
Lee-Ann Hattander
Greg Carruthers

Club Patron
Les Porter - 4958 5840
www.lesporter1.com.au

Please feel free to contact any of the Committee members to discuss club matters and to have those matters raised at a Committee meeting. The Committee meets on the first Wednesday of each month.

Newsletter Editor
Lee-Ann Hattander
leeannphotography63@gmail.com

Skiffy

Newsletter for the Belmont 16s Photography Club

May 2019

New Start time for Competition Nights

At the last committee meeting it was decided to bring forward the start time for competition nights in an attempt to shorten these nights.

From the May competition night (16th May) the judging will commence at 7:00pm instead of 7:30pm.

Please ensure your prints are on the stands no later than 6:30pm to allow the judge time to view the prints before judging commences at 7:00pm.



*Sea Horses -
Dennis Archibald*

2019 Memberships Reminder - from Annette Collins

Hi members. Membership is now overdue. Please renew your membership if you have not already done so. Membership is \$5.00.

Unfortunately I will be away for our next two meetings in May. You can renew by PayPal on the website or by Bank Transfer. I will be back Wednesday 22nd if you wish to pay me cash.

Your 16 Footers membership card needs to be sighted by myself as well. It has to be this year's card which can be obtained at the front desk. You can email me or text me a photo of your card if that is easier at nettiedakka@bigpond.com or 0417 693 888

Thanks everyone!

May Judges - from Dennis Archibald

Print Competitions.

Colour and Nature print competitions will encompass large prints across all three grades and small prints in two grades (A and B).

Our print judge for May will be **Roy Killen** for A and B grade. We are still looking for a Print Judge for the Advanced Grade.

EDI Competitions

EDI entries for Colour, Nature and Set Subject close on Sunday 12th May and will be available for all three grades. Student members can enter the Set Subject competition.

Colour EDIs will be judged by **John Chapman**. John judged for us last year in October and I thought members might like to see again his comments from judging that competition.

“Composition of almost every image was very good and members should be commended on that as cameras don’t do that for you. A number of images could be improved with better use of software. Decades back, photographers has also to be expert darkroom workers to do well. These days the use of software like Photoshop and its clones are an essential part of modern photography. As much time should be spent learning how to use software better as there is spent on using cameras to create images. Software can appear daunting, my advice is to just add one skill or trick each time. It is easiest when you have something specific you want to achieve, search the web for how others solved the problem, keep notes (I call it a cheat sheet) of what tool or menus to find the key bit, then try it on several images. Don’t try to learn everything at once, in fact I don’t think anyone knows how to use every possible tool for solving every possible manipulation. Overall there were some very nice images for a monthly competition.”

If you want to know a little bit more about John you can visit his website at

<http://john.champan.name/index.html>

Graham Harris will judge Nature EDIs. Graham’s website can be found at <https://www.grahamharrisimagery.com/>

May Set Subject - Sports Photography

Greg Carruthers from our Advanced Grade will judge this month’s set subject - Sports Photography. The image must be in colour and emphasize the action/interaction involved in the sport. The sport can be outdoor or indoor and could be a team or individual event.

Please make sure you read the definitions for the Set Subjects for the following months. They can be found in the Members area on the Club website.

NPF Weekend - from Barbara Hunter

This year’s NPF is scheduled for Saturday 13th and Sunday 14th July. This is a great weekend of competition, guest speakers and socialising with fellow photographers from across the region. Closing date for entries is Friday 21 June.

Entries:

Prints - 2 prints each in Colour, Monochrome, Nature and Small Prints.

EDIs - 2 images each in Colour, Monochrome, Nature and Creative.

Entry \$30. This includes images entries, attendance on both days and morning tea on Saturday.

The NPF committee is in need of a Treasurer. There isn’t much work involved, probably only 3 - 4 weeks at NPF time. Anyone interested in becoming Treasurer should contact Barbara Hunter

NPF Photo Safari will be held on Sunday 28 July. Location to be decided.

March Judges Comments - from Dennis Archibald

Judging of Colour EDIs was undertaken by Margaret O'Grady EFIAP/s GMAPS SAPS PSQA. No specific comment from Margaret other than a mention that "there were some very nice images" amongst those that she judged.

May 2019 Presentations - from Diane Schofield

The 2019 presentations program is now on the website in the documents area:

<https://belmont16s.myphotoclub.com.au/club-rules-and-documents>.

Please scroll to the bottom of the page and you will locate it. It will be regularly updated.

May Presenters

8 May - Colin Woods will be presenting the National Digital Portrait Competition and Exhibition. This competition is informally titled 'Portraits for Parkinson's'

Money taken at the door will be donated to the Parkinson's Disease charity.

22 May - John Alessi - Audio Visuals

John is an award winning photographer, he is also the President of the Ingleburn RSL Photography Club. He is a photographic judge and has presented at many FCC Judging courses. He enjoys making audio visuals. An example may be viewed at the Ingleburn RSL Photography Group site <https://vimeo.com/32198652>

HOMEWORK

Read your camera manual before 12 June. If you cannot find it, download it!

On Wednesday 12 June Bill Chambers will be presenting **Aperture, ISO, Shutter Speed**. Bring your cameras and manuals to this session as it is the preparation for the practical at Belmont 16s on Saturday 15 June. Bill will be the leader for the practical.

We all know that Bill is a fantastic photographer and has a lot of patience, however, it is expecting a lot from him if we expect him to be a 'techo' expert for every camera on the market.

In June Roy Killen will be covering 'Solving common problems'. This session is all about YOU! Now is the time for you to begin thinking about your (photographic) problems and sending them along to Roy. Your input is important as Roy will prepare this session based on your information.

Belmont 16s Photography Club Exhibition

The Raymond Terrace Library will be hosting our exhibition in May 2019. The opening is on Friday 3rd May.

Cessnock City Library will then be hosting this exhibition in June 2019.

Please make sure you see it.

Thank you all for contributing. A big thank you to the workers, especially Katherine James who cut mounts and framed all of the images.

PSA Interclub Competitions - from Roy Killen

Projected Image - Colour and Mono

In round 3 Peter Stanley's image "A Face in the Crowd" gained an Honour, Alex Hunter's image "Maori Lady" gained an Honour and Peter Finch's image "Tacking Point" gained an HM.

After three rounds we are coming first out of 28 clubs in Group E. The members who had images selected for round 4 are:

- Dennis Archibald
- Doug Coleman
- Chris Prior
- Margot Hughes
- Rob Oyston
- Roy Killen

Photojournalism

In round 2 Jennifer Carrigan's image "Airshow" gained second place in the open section and Chris Prior's image "Revenge" gained a HM in the human interest category.

After two rounds our club is in fifth place out of 13 clubs in Group B. Our round 3 images have been submitted and entries for round 4 close on 1 May.

Nature

The round 2 Nature results were reported in the March Skiffy. At that point we were coming third out of 41 clubs. Round 3 entries are currently being judged.

Photo Travel

In round 2 we did not manage to pick up any awards but we are coming third out of 21 clubs in Group B. Entries for round 3 close on 1 May.

You have just two more chances to have an image selected to represent the club in the current PSA Interclub competitions - both Photojournalism and Photo Travel entries close on 1 May.

When you are entering you will find that your previous entries are still visible, you can change those entries at any time up until the closing date. If you had an entry selected to represent our club in a previous round you cannot enter that image again, so please change it.

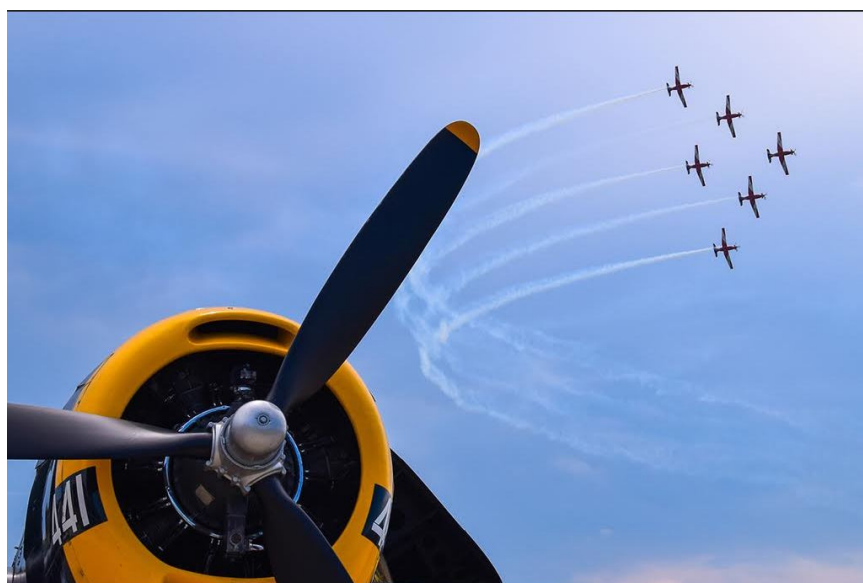
For more information about the PSA Interclub competition please contact Roy Killen (roykillen@mac.com)

PSA Interclub Competitions - from Roy Killen



*A Face in the Crowd -
Peter Stanley*

*Maori Lady -
Alex Hunter*



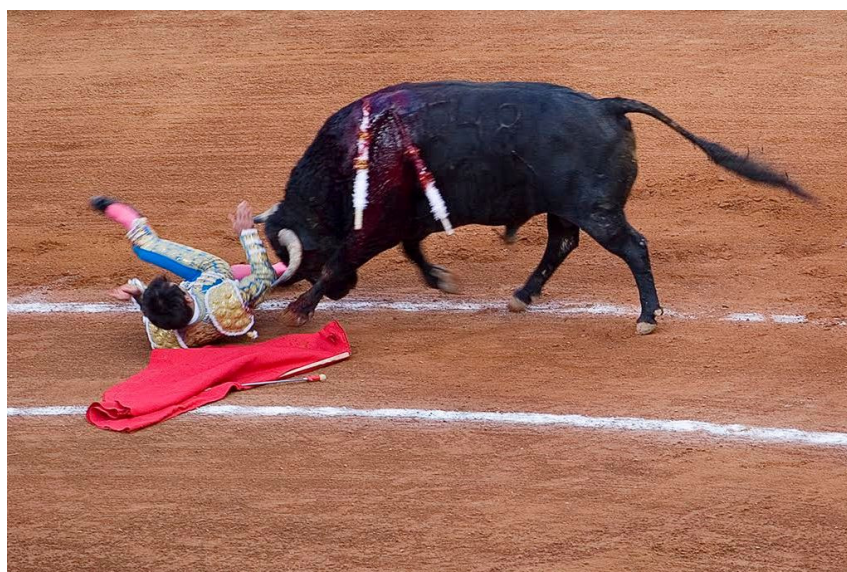
*Airshow -
Jennifer Carrigan*

PSA Interclub Competitions - from Roy Killen



*Tacking Point -
Peter Finch*

*Revenge -
Chris Prior*



Upcoming Monthly Competitions & Events

May Competitions	Colour, Nature	Set Subject - Sports Photography - Judge Greg Carruthers
May Presentations	Wed 8th - Colin Woods - National Digital Portrait Competition Wed 22nd - John Alessi - Audio Visuals	
June Competitions	Colour, Mono	Set Subject - Iconic Australia - Judge Roy Killen
June Presentations	Wed 12th - Bill Chambers - Aperture, ISO, Shutter speed Sat 15th - Practical - Bill Chambers - Aperture, ISO, Shutter speed - @ Belmont 16s Wed - 26th - Roy Killen - Solving common problems	
July Competitions	Colour, Nature	Set Subject - Mood - Judge Alex Hunter
July Presentations	Wed 10th - Bill Chambers - Basic Flash Techniques Wed 24th - Roy Killen - Resizing images (down and up)	
August Competitions	Colour, Mono	Set Subject - Creative Flash - Judge Bill Chambers
August Presentations	Wed 14th - Roy Killen - Analysing and evaluating images Wed - 28th - Jye Currie - My photographic journey	
September Competitions	Colour, Nature	Set Subject - Fog or Mist Landscape - Judge Di Schofield
September Presentations	Wed 11th - Michelle Kennedy - Creative thinking and composite images Wed 25th - Diane Schofield - Preserving our heritage - photobooks	
September Club Outing	Sat - 14th - Hunter Wetlands - Bird & Nature Photography (will include morning tea)	
October Competitions	Colour, Mono	Set Subject - Self Portrait - Judge - Colin Woods
October Presentations	Wed 9th - TBA Wed 23rd - Roy Killen - Lake Macquarie Digital National Competition	
November Competitions	Image of the Year	
November Presentations	Wed 13th - Neville Foster - Macro Photography Wed 27th - TBA	
December	Christmas party and awards presentation	

BELMONT 16S PHOTOGRAPHY CLUB

For all competition definitions please see the club documents and information in the Members area of the website

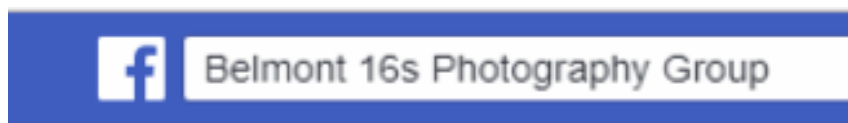
MEMBERS
ALL CLUB DOCUMENTS AND INFORMATION
SKIFFY – OUR NEWSLETTER
TRAINING / PRESENTATION NIGHTS AND SUPPORTING DOCUMENTS

Stay Connected

You can stay connected with other club members and find out about activities through the club's website and Facebook group

Website

belmont16s.myphotoclub.com.au



Borrowing Club Equipment

Club members are able to borrow the following equipment:

- Mount board cutter
- Spyder for monitor calibration
- Flat-bed scanner

Please contact Alex Hunter if you wish to borrow any equipment.

Please support Belmont 16s

All members are reminded when visiting the 16 Footers to present their membership cards when making a purchase, drinks, food etc as all of these purchases are credited to our overall membership purchases and averaged out. If we reach the average spend per member, determined by the 16 Footers we become eligible for sponsorship to the value of \$1000 each financial year. Unfortunately our failure to reach the average spend per member means that we do not reach that \$1000. Without sponsorship it can only mean that Photography Club membership fees would have to rise. I encourage all members to consider the 16s when planning a night out and don't forget to present your membership card when making purchases.