

Who's who in the Club

President
David Vane

Vice President
Dennis Archibald

Secretary
Susan Slack

Assistant Secretary/
Jill Helps

EDI & Judge Co-ordinator
Dennis Archibald

Treasurer
Liz Woods

Membership Co-ordinator
Annette Collins

Webmaster
Colin Woods

Presentations Co-ordinator
Diane Schofield

Social Activities
Co-ordinator
Barbara Hunter

Equipment Loans
Co-ordinator
Alex Hunter

Committee Members
Katharine James
Ian Marriner
Roy Killen
Susan MacNeill
Bill Chambers
Terina Vale
Lee-Ann Hattander

Club Patron
Les Porter - 4958 5840
www.lesporter1.com.au

Please feel free to contact any of the Committee members to discuss club matters and to have those matters raised at a Committee meeting. The Committee meets on the first Wednesday of each month.

Newsletter Editor
Lee-Ann Hattander
ghattander63@gmail.com

Skiffy

Newsletter for the Belmont 16s Photography Club

November 2018

Shortland Wetlands Bird Safari

Twenty five club members attended the bird photography excursion to the Hunter Wetlands on 27th October. It was a fun morning and the Wetlands Centre is prepared to let us in early on another date if there is sufficient interest. If you would like to register your interest in a future excursion please contact Diane Schofield.

Thank you to Roy Killen for organising the excursion, it was a beautiful morning and even though the birds seemed to forget their instructions on how to pose for us, it was still a very enjoyable day. The morning tea rounded things off nicely!



Some very dedicated photographers!

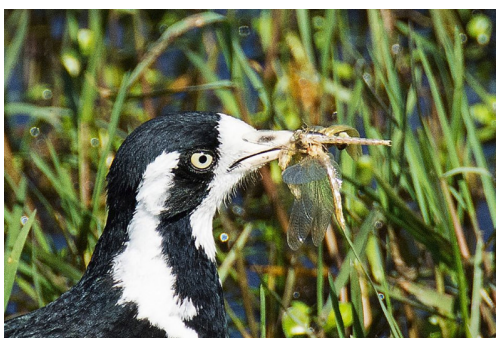


Photo by Anna D'accione

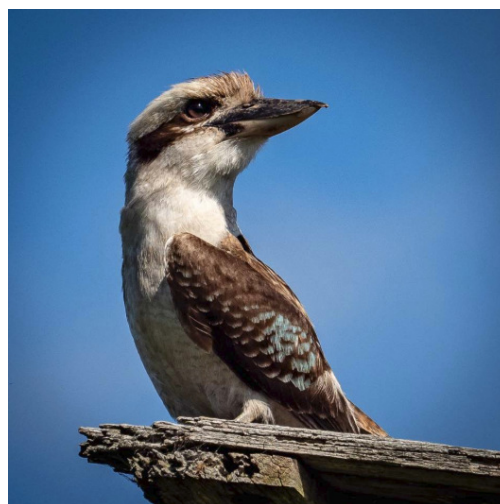


Photo by Phil Whiteman

PSA Interclub Competitions - from Roy Killen

Thank you to the twelve club members who submitted images for Round 1 of the colour/mono competition. All the Advanced Grade club members were invited to score these entries and the six top scoring images (those that will make up the club entry) were: "Centre of attention" by Margot Hughes, "Move over" by Frank Kolver, "Wild horses" by Roy Killen, "Juvenile Australian water dragon" by Bettina Damme, "Enough of your cheek" by Diane Schofield and "Flashing yellow" by Chris Prior.

Entries are still open for Round 1 of the Photojournalism competition and Round 1 of the Photo Travel competition. **These entries must be submitted by 3rd November.**

Entries for Round 2 of the Nature competition will open soon.

Our club was chosen to judge Round 1 of Section A of the Nature Interclub. (We entered Section B.) The judging will take place at the Belmont 16s on Wednesday 5th November starting at 9am. You are welcome to observe the judging.

PSA Interclub Competitions for 2018-19

Closing dates for entries to be submitted on the Belmont 16s website.

Projected Image (Colour or Mono)

- R1 October 15 – CLOSED (R1 = Round 1 etc)
- R2 December 15
- R3 February 12
- R4 April 12

Nature

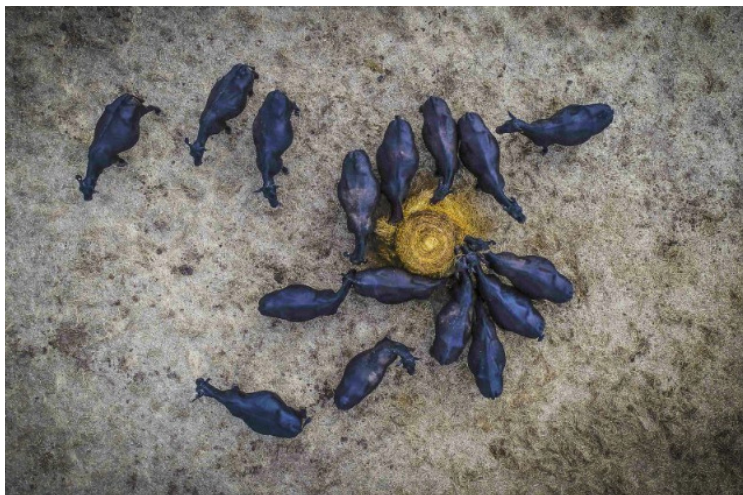
- R1 October 15 – CLOSED
- R2 January 1
- R3 April 1

Photojournalism

- R1 November 1
- R2 January 1
- R3 March 1
- R4 May 1

Photo Travel

- R1 November 1
- R2 February 1
- R3 May 1



'Centre of Attention' by Margot Hughes

ALL IMAGES

Submit with normal club requirements, 1920 x 1200 pixels and 2MB maximum file size. After entries close for each round, the Advanced Grade members will be invited to score the images. The six images gaining the highest aggregate score will be chosen to represent the club.

For more information, email Roy Killen roykillen@mac.com

Recent Judges Comments - from Dennis Archibald

Two of our recent EDI Judges have made some general comments on the images they judged for us. Note similar comments around sharpness of images.

Graham Harris - September EDI Nature Judge

"Thank you for the opportunity to assess your Nature images in this month's Club competition. It was a real pleasure to judge such a broad range of Nature subjects. Overall the images displayed a good understanding of composition and lighting. I did note however that a number of images were not as sharp as they could be - this was primarily because of subject movement. Exposure was very well handled and when faced with harsh lighting conditions the photographers handled this reasonably well. It was also pleasing to see a number of images which conveyed a story - an increasingly important aspect of Nature photography these days. I did reject several images - many of these were good images in their own right but given the strict definition that applies to Nature photographs in International competition I felt it important to do this so you have a better understanding of what is required at this level internationally. Once again, thank you for the opportunity judge your clubs Nature competition."

Jennifer Fawkes - September EDI Colour Judge

"Overall I found the images to be of a high quality, and a number of images took my breath away. I can see that the core concepts of camera craft and technical experience is well established in your club members. There were very few images I found that were not sharp, or had a poor choice of aperture for the selected image. What I did find that in a number of images I felt the need to comment on the choice of lighting or time of day the image was taken, and felt that some education around photographic light may be of benefit to your members. We all know that the light is better at each end of the day, but how many of us really practice this."

November Presentations - from Diane Schofield

The Lake Macquarie National Exhibition of Photography presentation will be held on Wednesday 14 November instead of our regular presentation night.

Wednesday 28 November will be Street Photography by Pete Jordan (Jordy). It is not an easy task to get consistently good street photography images. There is an art to it! Jordy is an excellent street photographer and you will gain a lot of tips from him.

See his work at <https://lifewithjordy.blogspot.com>

<https://facebook.com/Life.with.Jordy.Photography>



*Contrasts -
By Jennifer Carrigan*

Important Dates - Make sure to mark your calendar! - from Barbara Hunter

14 November - The Lake Macquarie National Exhibition of Digital photography presentation

21 November - Image of the Year (IOTY) Awards Presentation. This will be a fun social atmosphere with drinks and nibbles provided. Not to be missed!

9 December - Ho Ho Ho - Club Christmas Party and presentation of overall Image of the Year winner (chosen by online voting). A wonderful way to come together as a club and celebrate our great year of photography. More details available soon.

Set Subjects for 2019 - from Susan Slack

Here is the proposed list of set subjects for 2019. Please note that the list is not final at this stage. If anyone has any suggestions for set subjects or modifications please forward these to Susan Slack so that they can be presented at the next committee meeting for review. The sooner these can be organised the better as everyone then has plenty of time to think about their entries for next year.

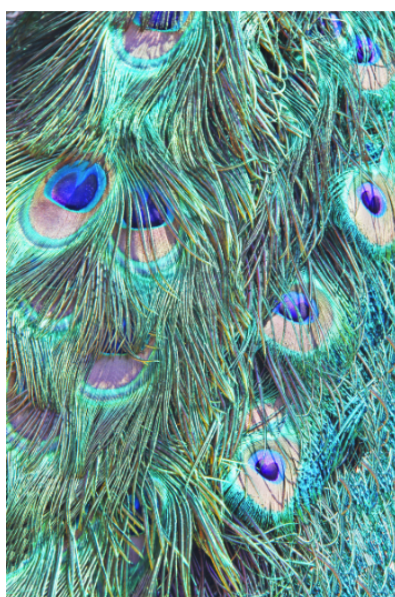
- A single dominant colour
- Negative space
- Triptych
- Pet photography
- Sports photography
- Night photography
- Mood
- Creative flash
- Long exposure
- Minimalism
- Self portrait (not a selfie!)

Borrowing Club Equipment

Club members are able to borrow the following equipment:

- Mount board
- cutter
- Spyder for monitor calibration
- Flat-bed scanner

Please contact Alex Hunter if you wish to borrow any equipment.



*Aqua-marine-
By Brenton Elsey*

BELMONT 16S PHOTOGRAPHY CLUB

Upcoming Monthly Competitions

November Image of the Year (IOTY)

December Club Christmas Party

For all definitions please see the club documents and information in the Members area of the website

[Return to Home Page](#) > [Members Area](#)

All club documents and information

This page contains links to all of our club documentation. Each document is a PDF document that will open in a new tab or page.

[Members Information Pack](#) – This contains information that all members should be familiar with. All competition rules and definitions are included in this document.

[Print Submission form](#) – This form should be used by any member submitting prints for exhibitions in Libraries or other venues external to our club.

[Set Subject Definitions For 2018](#) – details on the topics for the Set Subject competition.

[Judging Guidelines EDI 2018](#) supplied to remote judges

[Club Constitution](#) – rules which define our club's operation.

[Information supplied to our judges](#) – guidelines that are used by judges who assess our digital entries.

[Skiffy – our monthly newsletter](#)

Stay Connected

You can stay connected with other club members and find out about activities through the club's website and Facebook group

Website

belmont16s.myphotoclub.com.au



Please support Belmont 16s

All members are reminded when visiting the 16 Footers to present their membership cards when making a purchase, drinks, food etc as all of these purchases are credited to our overall membership purchases and averaged out. If we reach the average spend per member, determined by the 16 Footers we become eligible for sponsorship to the value of \$1000 each financial year. Unfortunately our failure to reach the average spend per member means that we do not reach that \$1000. Without sponsorship it can only mean that Photography Club membership fees would have to rise. I encourage all members to consider the 16s when planning a night out and don't forget to present your membership card when making purchases.