



BELMONT 16S PHOTOGRAPHY CLUB NEWSLETTER

May 2017

In This Issue

- The Committee
- Important Information about our Club & Committee
- Judges
- Dates to Remember
- What's Happening in and around the area and the club
- Borrowing Club Equipment
- Borrowing Equipment
- Updating your Details
- Helpers Needed & Supporting the Belmont 16s
- A message from the Editor

Meetings held every 3rd Wednesday of the month at Belmont 16 Foot Sailing Club.

Who's Who in the Club

Patron: Les Porter 49585840 www.lesporter1.com.au

President: Roy Killen email: roykillen@mac.com

Vice President: Katherine James

Secretary: Susan Slack

Assistant Secretary: Jill Helps

Treasurer: Peter Finch

Judges Co-ordinator: Richard Strange

Membership Co-ordinator: Alma Wyllie

Webmaster: Colin Woods

Presentations Co-ordinator: Diane Schofield

Committee: Phil Woodman and Susan MacNeil Bev Woodman,

Carole Lorimer, Alex & Barbara Hunter, Peter & Sheila Stanley,

Editor: Erin Bonvino email: erin@bongroup.com.au

Please feel free to contact any of the Committee members to discuss club matters and to have those matters raised at a Committee meeting. The Committee meets on the first Wednesday of each month.



IMPORTANT INFORMATION REGARDING THE CLUB AND IT'S COMMITTEE

Following the last committee meeting, we decided we need to advertise more widely for club members to consider nominating for two special committee positions, that of Treasurer and President. Both Peter Finch and Roy Killen have decided against renomination and urge others to think about offering to fill their positions. As they have been so successful, some members may feel they are unable to fill their shoes. However, the duties of the two positions have definite limits and the rest of the committee will be happy to help out with most aspects. We will be mentioning this at every club meeting from now until August as it is imperative that the incoming members make decisions sooner rather than later. If anyone feels they would like to contribute in this regard, please approach any of the current committee and we can start the ball rolling to ensure a smooth handover. There must be plenty of members who have had a little experience in their work life that would be relevant. This is one way of giving back to your club that supports your wonderful photography. If you prefer, you can contact Sue Slack (Secretary) on email: sandgslack@gmail.com

May Print Judge John Newton

- ♦ May EDI Colour Judge Leanne Alessi
- ♦ May EDI Nature Judge Kerry Boytel
- ♦ May EDI Set Subject Judge Jill Helps



Dates to Remember:

- ♦ NPF 8 -9 July
- ♦ Competition Entries are to be handed in at the club on or before 14 June
- ♦ Scavenger Hunt will be held in Newcastle on 16 July
- ♦ NPF is scheduled for 8th and 9th July



What's Happening in the club and around the area?

SMALL PRINTS NEEDED

Our club has been invited to display 40 small prints (usual size for club competitions) at the Swansea library during July and August.

If you would like one or more of your prints to be included in the display please give them to Roy Killen no later than the June club meeting (21st June).

The subject matter is open but please remember that young children will be able to see the display.

ANIMALS IN THE WILD COMPETITION

Details of a special competition for images of Australian animals and birds are available at <https://www.animalsinthewild.net/?amp%3Bqid=60550> The best image in each of the following four categories will receive a \$100 gift voucher:

- A. The image that most evokes a connection with an animal in the wild in Australia
- B. The most beautiful image of a bird in the wild in Australia
- C. The image that conveys the threats facing native animals in Australia, including the reality of environmental and habitat damage, hunting, and guns and killing culture in Australia
- D. The most beautiful image of animal in the wild photographed by a photographer aged 16 years or under.

Photography Workshop – The Art of the Portrait

This 2-day workshop is being presented by Daniel Arnaldi. It will be held at the Mercure Kooindah Waters Resort in Wyong and it will emphasise the use of light (both available and artificial) in portraiture. There will be practical sessions in studio and outdoor settings. Participants will be able to take home a fine art print of one of the images they capture during the workshop (at no additional cost).

There are two weekends to choose from. The workshop will be held on 27 & 28th May 2017 and on 10th & 11th June.

Further details and costs are available at <http://www.danielarnaldi.com/p/workshop-portrait>.

Members of our club will receive a 40% discount on the cost of the workshop and discounted accommodation at the venue if you want to stay overnight.

NPF, Belmont prints and EDI due 14th June. It is only one month away!

Prints are then delivered to Petro Holowinskyj on 19th June or before.

Judging is carried out at Maitland Sunday 25th June.

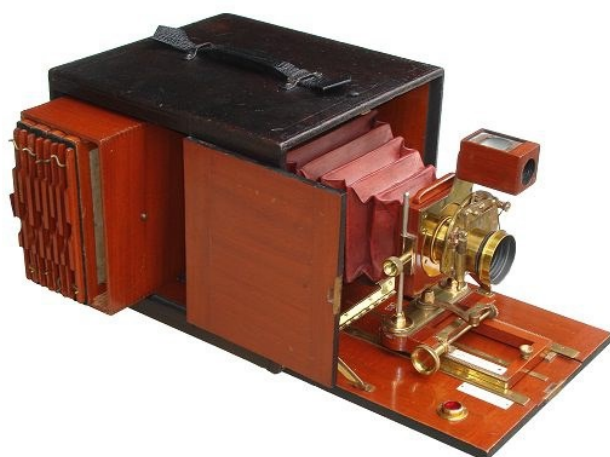
Scavenger Hunt Sunday 16th July. Location etc will be announced at later date .

Wednesday August 2nd is the voting date for the Scavenger Hunt.

This will take place after our committee meeting at 16's about 19:30

BORROWING CLUB EQUIPMENT

Don't forget everyone as club members we have the following equipment that maybe borrowed;
Matt cutter, spyder for calibration , Guy Gowan DVD's, as well as a lens align system. Please contact
Alex Hunter if you wish to borrow any equipment
Tel:49467390 or email alexhunter37@bigpond.com



Belmont 16's Photography Club



PHOTO BOOKS

Our club has been registered with Momento Pro so that members can get discounts on photobooks and other products. Refer to the recent post on the club website for a link that gives instructions on how to take advantage of these offers.



UPDATING YOUR EMAIL ADDRESS

If you change your email address (or mail address or phone number) please go to the “My Details” menu, select “My Profile” and make the changes. To edit your profile page you need to click on the ‘cog’ icon that is just below the right hand side of the banner photo on your profile page.



COMMENTS ON MONTHLY COMPETITION ENTRIES

If you have a few spare minutes, click on the “View Image Galleries” quicklink on the website homepage, visit one of the galleries and add some comments to your images or images of other members. Everyone likes to know what other members think of their images.

HELP NEEDED

Six times a year our club is permitted to run the ‘lamb tray’ raffle in the 16s on Thursday and Friday night. This is an important source of income for our club and it is one of the reasons that our membership fees can be so low. Selling the raffle tickets is a simple process - the sellers sit at a table and wait for customers, you do not have to move around the club. If you are able to assist with this task, even for just one night, please contact Katherine James or Barbara Hunter.



SUPPORT THE BELMONT 16s

Don't forget to continue to show your support for the 16s by using your membership card when purchasing food and drinks in the club. The more you spend on food and drinks in the club the more chance we have of getting a subsidy from the 16s at the end of the year.

A Letter from the Editor

After much thought and consideration. I have decided that this will be my last newsletter for the our photography club.

I have enjoyed my last 12 months as the editor of our Skiffy for our club and I hope everyone has enjoyed my monthly contribution. But with a growing study load, a business , Husband, and 2 young children. Family time becomes of the essence.

Thank you everyone for having me and to Roy, Barbara, Bev, Diane, Sue and our webmaster Col a “BIG THANK YOU” for all of your support. I have really appreciated it..

So as they say “Over & Out”

Erin Bonvino - “Be Bold, you can be boring when you are dead”

